

Zawyeh Gallery presents Two “New Vision” Pioneers at Art Dubai 2025

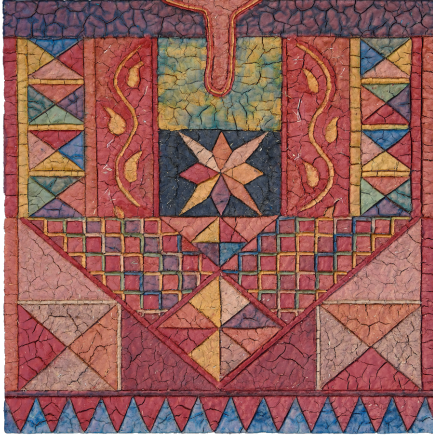
Nabil Anani and Sliman Mansour revisit their 1989 “New Vision” era by returning to experiment on natural materials

Zawyeh Gallery will present works by Nabil Anani and Sliman Mansour at Art Dubai 2025, revisiting their New Vision era from 1989. During that era both artists embraced natural, local materials such as goat leather, mud, henna, and straw as part of the boycott campaign of the First Intifada. This innovative approach marked a turning point in their artistic journeys, connecting their art directly to the land they celebrate. For this year’s exhibition, the artists revisit this iconic style with new works that reimagine their earlier techniques and themes.



Anani’s series Exit into Light returns to using untreated goat leather as a canvas, drawing inspiration from his 1989 work of the same name and shares its title with his Arabic memoir, Exit into Light. This series reflects Anani’s deep connection to the land, featuring delicate figures of people who blend seamlessly with the natural medium they are made of. The art pieces reflect details such as women and men with traditional dresses, children, mothers holding infants, and other subtle symbols celebrating the land, such as pigeons, embroidery, grapes, pottery, and conventional Palestinian buildings. Through his work, Anani continues to explore the relationship between the medium and identity, presenting a series that honors the rural life of the Palestinian people and their attachment to their lands.

Artist Sliman Mansour focuses on using straw and mud in his delicate works, blending the elements of the earth with the symbols that defined his works early in his career emphasizing Palestinian identity and traditions. In this series, he illustrates patterns of embroidery in square compositions that resemble the colorful



front part of the traditional Palestinian dress (thob). Crafted from colored straw and clay, these pieces are beautifully detailed reflecting the texture and appearance of embroidery stitches. Notable pieces include a map of Gaza adorned with vibrant embroidery-inspired shapes and a striking eye-shaped piece referencing his iconic Camel of Hardship.

More information

Tabarak Younis
tabarak@zawyeh.net
+971 56 6381111
www.zawyeh.net



Warehouse 27, Alserkal Avenue
Dubai, United Arab Emirates
+971 585 925667
zanani@zawyeh.net
www.zawyeh.net