



Rana Samara ***Inner Sanctuary***

May 22 - August 28, 2022

Unit 27, Alserkal Avenue



In her new exhibition; *Inner Sanctuary*, Rana Samara presents her personal intimate space revealing a layer of deep emotions connected with these places. From her comfortable lounge to a corner in her favorite café; she explores the settings that embrace her daily life. Along the way, she portrays an inner sanctuary, visually and sentimentally.

Samara depicts the inside of her world with fine details incorporating daily objects and furnishing. She uses her usual signature of charming colors and stunning decorative motifs to illustrate familiar locations pinned on her daily map; a lively studio, a neat kitchen, a colorful bedroom, corners of several cafés and bars, and even a calm abandoned swimming pool. Samara uses colors, motifs, and shapes to convey her sentiments showing either her content, calmness, anxiety, or frustration.

The painting displaying a hospital room with half-opened white curtains and a UV bag stand next to a bed for example, bears an unsettling feeling. The scattered red tubes on the surface of the colorful floors reflect commotion as if there was an emergency. Another artwork depicting an empty hospital bed covered with white sheets and an air conditioning system on the wall indicates coldness and stuffiness despite the colorful motifs on the walls. Whereas a bedroom with peacock feathers painted on the

background of it and several ladders around transmits a feeling of lightness, weightlessness such as a connection with the skies. The rooms, which appear to be warm and full of love and colors, range from what seems to be a studio to various window sills, bathrooms and paintings of seating areas.

The way she executes floors in her artworks is revealing, as they hint at the artist's sentiments towards the rooms she paints. Sometimes they are full of vibrant motifs, whereas other times they look like glass; fragile and colorless. In some paintings, Samara uses sharp and edgy squares, which also enhance a disquieting feeling.

Yet - except for one artwork - , she continues to leave out one central aspect in her paintings: humans. For Samara, it seems that humans are not essential, but their evidence is. Hence the subtle focus in the series on their traces. Records of their imprints can be found in every corner. One can see a suit hanging over closed curtains in a bedroom; a kitchen with a slipper in the middle of the floor; another kitchen with plates and food left on the top; a window sill with pots of plants, and cozy chairs with cushions.

Erasure could be a way to capture moments that people leave behind. It could be an attempt at emancipation from the restraints imposed by their presence and an opportunity to reveal concealed feelings of deep sentiments, whether joyful or gloomy.

In one work, Samara paints a young woman sitting on a sofa facing the viewer while wearing a training suit. She rests comfortably on a small blanket while holding her head as if thinking or contemplating. The figure blends with the room's background while a gas container appears from a far corner.

Text by Rana Anani



Rana Samara

Untitled (41), 2019

Acrylic, crayons and spray paint on canvas

200 x 490 cm | 79" x 193"



Rana Samara
Untitled (42), 2021
Acrylic and spray paint on canvas
203 x 290 cm | 80" x 114"



Rana Samara
Untitled (43), 2021
Acrylic and spray paint on canvas
161 x 201 cm | 63" x 79"



Rana Samara
Untitled (44), 2022
Acrylic and spray paint on canvas
203 x 187 cm | 80" x 74"



Rana Samara
Untitled (45), 2022
Acrylic and spray paint on canvas
101 x 97 cm | 40" x 38"



Rana Samara, Untitled (45), 2022, Detail



Rana Samara
Untitled (46), 2022
Acrylic and spray paint on canvas
101 x 105 cm | 40" x 41"



Rana Samara, Untitled (46), 2022, Detail



Rana Samara
Untitled (47), 2022
Acrylic and spray paint on canvas
105 x 139 cm | 41" x 54.7"



Rana Samara

Untitled (1-40), 2022

Acrylic and spray paint on canvas

30 x 40 cm | 12.8" x 15.7"



Rana Samara
Untitled (1), 2022
Acrylic and spray paint on canvas
30 x 40 cm | 12.8" x 15.7"



Rana Samara
Untitled (2), 2022
Acrylic and spray paint on canvas
30 x 40 cm | 12.8" x 15.7"



Rana Samara
Untitled (3), 2022
Acrylic and spray paint on canvas
30 x 40 cm | 12.8" x 15.7"



Rana Samara
Untitled (4), 2022
Acrylic and spray paint on canvas
30 x 40 cm | 12.8" x 15.7"



Rana Samara
Untitled (5), 2022
Acrylic and spray paint on canvas
30 x 40 cm | 12.8" x 15.7"



Rana Samara
Untitled (6), 2022
Acrylic and spray paint on canvas
30 x 40 cm | 12.8" x 15.7"



Rana Samara
Untitled (7), 2022
Acrylic and spray paint on canvas
30 x 40 cm | 12.8" x 15.7"



Rana Samara
Untitled (8), 2022
Acrylic and spray paint on canvas
30 x 40 cm | 12.8" x 15.7"



Rana Samara
Untitled (9), 2022
Acrylic and spray paint on canvas
30 x 40 cm | 12.8" x 15.7"



Rana Samara
Untitled (10), 2022
Acrylic and spray paint on canvas
30 x 40 cm | 12.8" x 15.7"



Rana Samara
Untitled (11), 2022
Acrylic and spray paint on canvas
30 x 40 cm | 12.8" x 15.7"



Rana Samara
Untitled (12), 2022
Acrylic and spray paint on canvas
30 x 40 cm | 12.8" x 15.7"



Rana Samara
Untitled (13), 2022
Acrylic and spray paint on canvas
30 x 40 cm | 12.8" x 15.7"



Rana Samara
Untitled (14), 2022
Acrylic and spray paint on canvas
30 x 40 cm | 12.8" x 15.7"



Rana Samara
Untitled (15), 2022
Acrylic and spray paint on canvas
30 x 40 cm | 12.8" x 15.7"



Rana Samara
Untitled (16), 2022
Acrylic and spray paint on canvas
30 x 40 cm | 12.8" x 15.7"



Rana Samara
Untitled (17), 2022
Acrylic and spray paint on canvas
30 x 40 cm | 12.8" x 15.7"



Rana Samara
Untitled (18), 2022
Acrylic and spray paint on canvas
30 x 40 cm | 12.8" x 15.7"



Rana Samara
Untitled (19), 2022
Acrylic and spray paint on canvas
30 x 40 cm | 12.8" x 15.7"



Rana Samara
Untitled (20), 2022
Acrylic and spray paint on canvas
30 x 40 cm | 12.8" x 15.7"



Rana Samara
Untitled (21), 2022
Acrylic and spray paint on canvas
30 x 40 cm | 12.8" x 15.7"



Rana Samara
Untitled (22), 2022
Acrylic and spray paint on canvas
30 x 40 cm | 12.8" x 15.7"



Rana Samara
Untitled (23), 2022
Acrylic and spray paint on canvas
30 x 40 cm | 12.8" x 15.7"



Rana Samara
Untitled (24), 2022
Acrylic and spray paint on canvas
30 x 40 cm | 12.8" x 15.7"



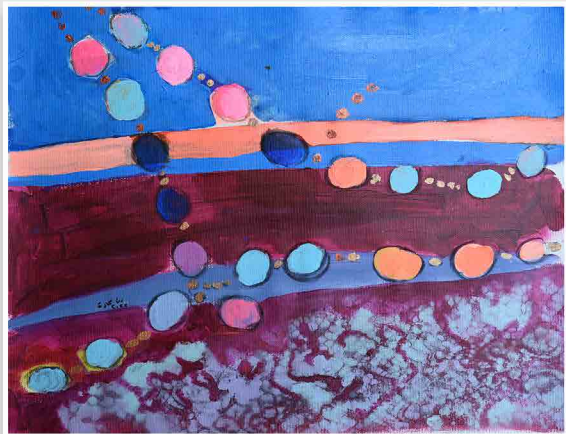
Rana Samara
Untitled (25), 2022
Acrylic and spray paint on canvas
30 x 40 cm | 12.8" x 15.7"



Rana Samara
Untitled (26), 2022
Acrylic and spray paint on canvas
30 x 40 cm | 12.8" x 15.7"



Rana Samara
Untitled (27), 2022
Acrylic and spray paint on canvas
30 x 40 cm | 12.8" x 15.7"



Rana Samara
Untitled (28), 2022
Acrylic and spray paint on canvas
30 x 40 cm | 12.8" x 15.7"



Rana Samara
Untitled (29), 2022
Acrylic and spray paint on canvas
30 x 40 cm | 12.8" x 15.7"



Rana Samara
Untitled (30), 2022
Acrylic and spray paint on canvas
30 x 40 cm | 12.8" x 15.7"



Rana Samara
Untitled (31), 2022
Acrylic and spray paint on canvas
30 x 40 cm | 12.8" x 15.7"



Rana Samara
Untitled (32), 2022
Acrylic and spray paint on canvas
30 x 40 cm | 12.8" x 15.7"



Rana Samara
Untitled (33), 2022
Acrylic and spray paint on canvas
30 x 40 cm | 12.8" x 15.7"



Rana Samara
Untitled (34), 2022
Acrylic and spray paint on canvas
30 x 40 cm | 12.8" x 15.7"



Rana Samara
Untitled (35), 2022
Acrylic and spray paint on canvas
30 x 40 cm | 12.8" x 15.7"



Rana Samara
Untitled (36), 2022
Acrylic and spray paint on canvas
30 x 40 cm | 12.8" x 15.7"



Rana Samara
Untitled (37), 2022
Acrylic and spray paint on canvas
30 x 40 cm | 12.8" x 15.7"



Rana Samara
Untitled (38), 2022
Acrylic and spray paint on canvas
30 x 40 cm | 12.8" x 15.7"



Rana Samara
Untitled (39), 2022
Acrylic and spray paint on canvas
30 x 40 cm | 12.8" x 15.7"



Rana Samara
Untitled (40), 2022
Acrylic and spray paint on canvas
30 x 40 cm | 12.8" x 15.7"

Rana Samara (born 1985, Jerusalem) is a Palestinian artist and a graduate of the International Art Academy, Ramallah (2015). Samara grew up in a typical Palestinian family. In her words: *"I spent most of my childhood and teenage years observing and analyzing social and gender relations. I came to understand how precious, yet also suffocating women's roles as carers and nurturers can be."*

Samara's work explores societal norms, sexuality, gender roles, and other factors associated with modern Palestinian life. Her work focuses on the less obvious factors that underpin the daily lives of women who reside in overcrowded refugee camps and rural communities – women whose lives continue to be blighted both by conservative traditions and the exigencies of life under occupation.

Focusing on marital intimacy, Samara demystifies many social taboos and translates these onto large, bold and colorful canvases that are both remarkable social statements and beautiful artistic constructs. Frank conversations with women form the backbone of her work that transcends the private space into the realm of the public. Often depicting the aftermath of sexual encounters, Samara's paintings are outstanding visual metaphors of the lives of Palestinian women existing in restricted environments, cramped and constrained by internal traditions and by external forces.

Samara has participated in a number of exhibitions including Contemporary Istanbul, Turkey, 2019; Art Dubai, United Arab Emirates, 2019; Beirut Art Fair, Lebanon, 2017; and Art Dubai, United Arab Emirates, 2017. In addition to several local exhibitions in Ramallah and Jerusalem.



Warehouse 27, Alserkal Avenue
Dubai, United Arab Emirates
+971 585 925667
zanani@zawyeh.net
www.zawyeh.net